

X-Y Cantilever and Skidding System

Description

GustoMSC has developed the X-Y cantilever and its integrated skidding system to expand the drilling envelope of the jack-up platform and to improve the drilling operations compared to a 'classic' cantilever arrangement.

GustoMSC has combined the cantilever and the drill floor structures to one fixed package which can move both longitudinally and transversely relative to the deck of the drilling jack-up.

Main advantages of this system are:

- large longitudinal and transverse reaches
- drilling load evenly distributed between cantilever beams
- no flexibles between cantilever and drill floor
- simplified BOP handling
- high drilling load capacity over full reach envelope
- minimum deck obstruction
- elevated position of cantilever minimizes the required air gap of the hull
- no HP mud hoses between hull and cantilever if mud pumps are arranged on cantilever (optional)

Patents

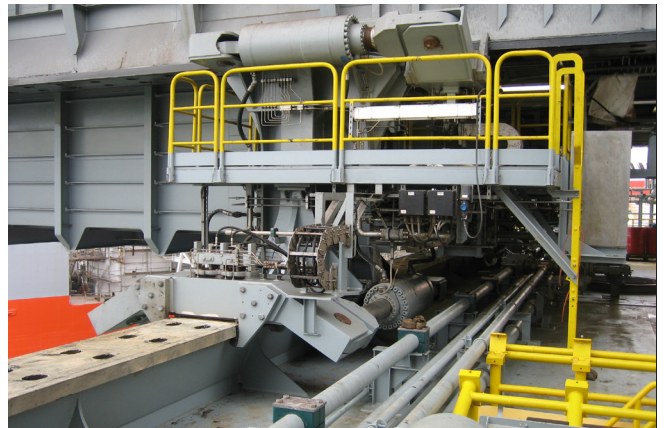
The GustoMSC X-Y cantilever and skidding system is patented worldwide.

References

X-Y cantilever and skidding systems are fitted on the following jack-ups:

• Maersk Innovator	CJ70	2002
• Maersk Inspirer	CJ70	2004
• Maersk Resilient	CJ50	2008
• Maersk Resolute	CJ50	2008
• Maersk Resolve	CJ50	2009
• Maersk Reacher	CJ50	2009
• Naga 2	CJ46	2008
• Perro Negro 6	CJ46	2009
• COSL 936	CJ46	2009
• COSL 937	CJ46	2009
• Naga 3	CJ46	2010
• Perro Negro 8	CJ46	2010
• Swift 10	SEA-2750	2011
• West Elara	CJ70	2011
• West Linus	CJ70	2013
• Maersk TBN1	CJ70	2013
• Falcon Energy TBN1	CJ46	2013
• Maersk TBN2	CJ70	2014
• Falcon Energy TBN2	CJ46	2014

Data presented in this product sheet is for information only and subject to change without notice.



The Netherlands

Karel Doormanweg 66, 3115 JD, Schiedam
P.O. Box 687, 3100 AR Schiedam

Telephone +31 (0)10 232 0800
Telefax +31 (0)10 232 0801

www.GustoMSC.com

GustoMSC